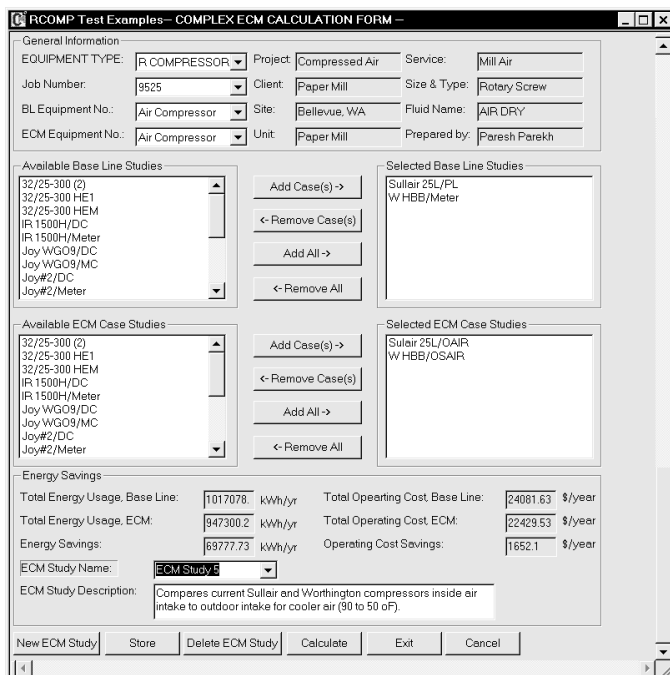
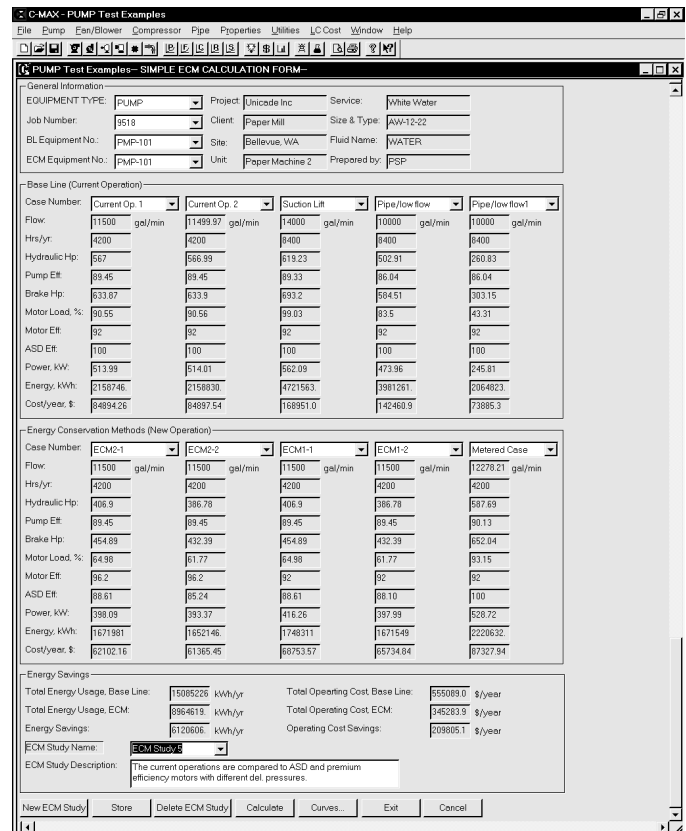


C-MAX offers two modules for your systems analysis: Energy Conservation Measure (ECM) and Life Cycle Costing (Economy Evaluation).

ECM module provides two comparison methods of energy conservation measures analysis: **Simple** and **Complex**. In a "simple" method, as many as five operating scenarios for the Base Case and post ECM case for the pump, fan or compressor system can be selected. In the complex method, it is further enhanced to provide unlimited case study choices to provide an off-line simulation capability.



Complex ECM Calculation Form



Simple ECM Calculation Form

### Features of ECM & LC Modules

- Calculates energy usage, total operating cost, energy saving, operating cost saving, normalized cost, pay-back, etc., for both baseline and ECM cases.
- Allows unlimited case studies of ECM and Life Cycle Costing to select most cost-effective system.
- Prints ready-to-use ECM Analysis Report, Energy Cost Summary Report, Load-Duty Cycle Report, Economic Evaluation Report, Life Cycle Costs Yearly report, and Non-Energy Benefits report.

The Simple ECM Calculation Form lets you plot multiple system curves for selected cases to compare the equipment performance. You can plot the system curve, rotating equipment characteristic curve, the rotating equipment curve under adjustable speed drive control, etc., in the same chart to understand the performance of the rotating equipment under various operation scenarios.

